

# VIA Rail – Proposed Elevated Passenger Platforms for Ottawa Train Station

National Capital Commission

Board of Directors

January 20–21, 2016

# Purpose of the submission

To obtain Design Concept Approval for the proposed elevated passenger platforms for Ottawa Train Station.



1. Project Objectives
2. Location
3. Phasing
4. Concept Design
5. Recommendation

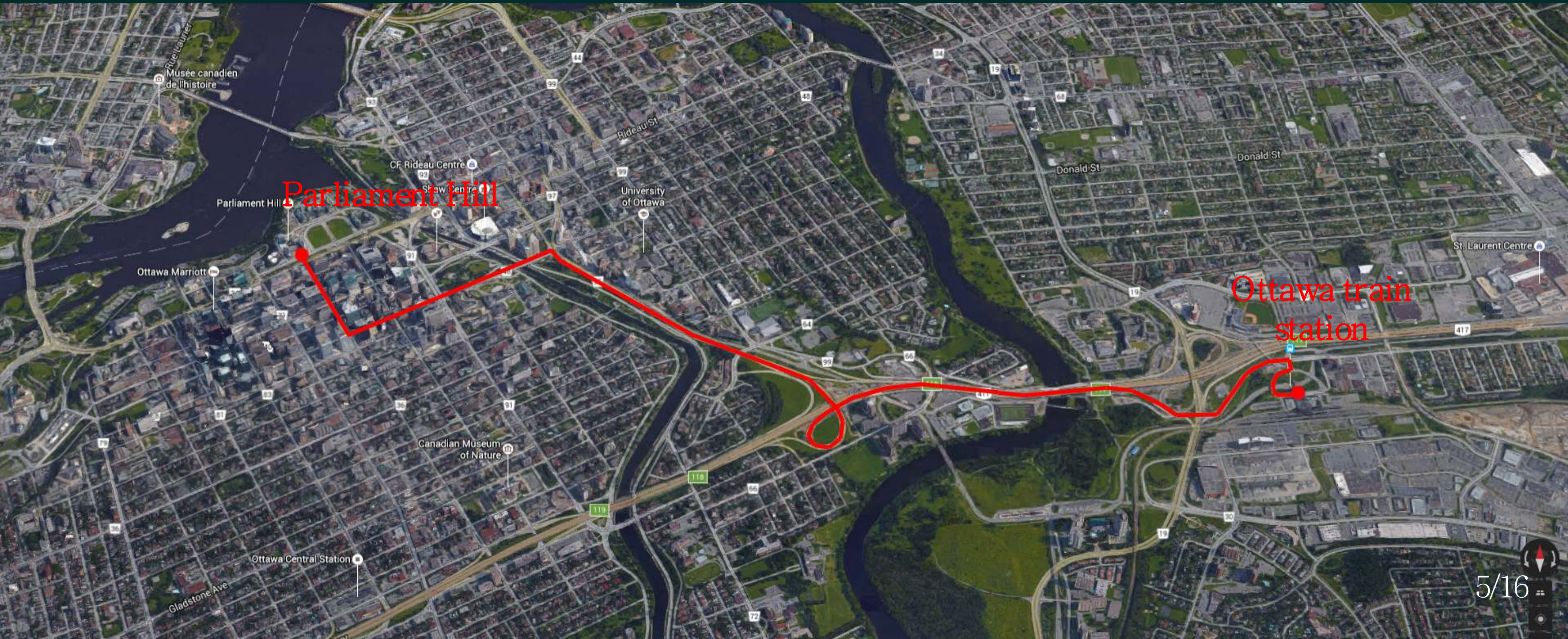
# Project Objectives

- Enhance passenger experience and level of service;
- Meet regulatory accessibility standards for passengers with limited mobility;
- Facilitate passenger embarkation and debarkation, and baggage handling;
- Improve health and safety for passengers and operators;
- Reduce Station stop time for through train disembarkation;



# Location

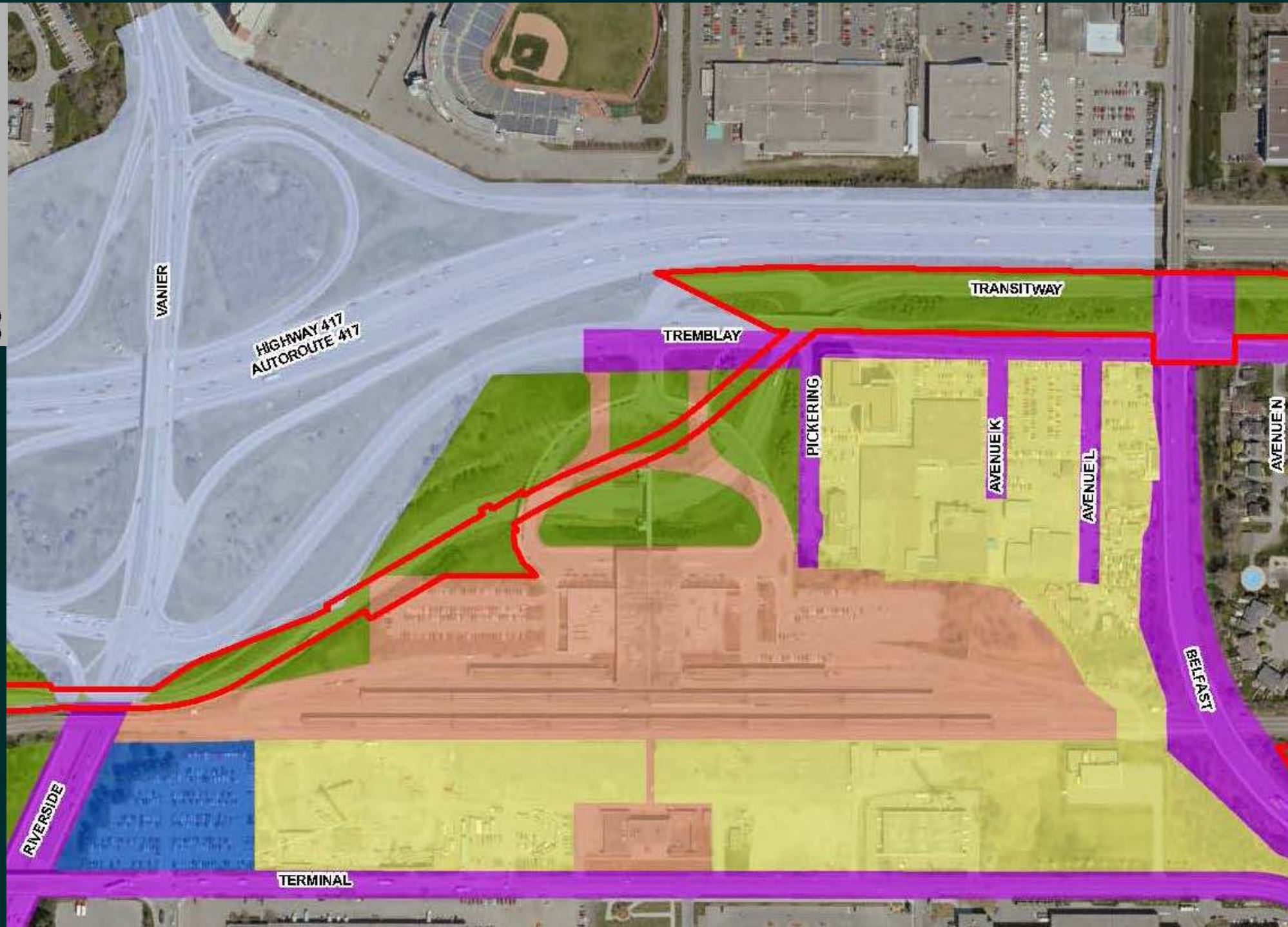
5.4 km from Parliament Hill





# Land Ownership

- Legend / Légende**
- NCC  
CCN
  - CANADA POST  
POSTES CANADA
  - CITY OF OTTAWA  
VILLE D'OTTAWA
  - MTO  
MTO
  - PRIVATE LAND  
TERRAIN PRIVÉ
  - VIA RAIL  
VIA RAIL
  - OLRT CORRIDOR (2015)  
CORRIDOR TLRO (2015)





# Phasing



Phase 1A (2017)

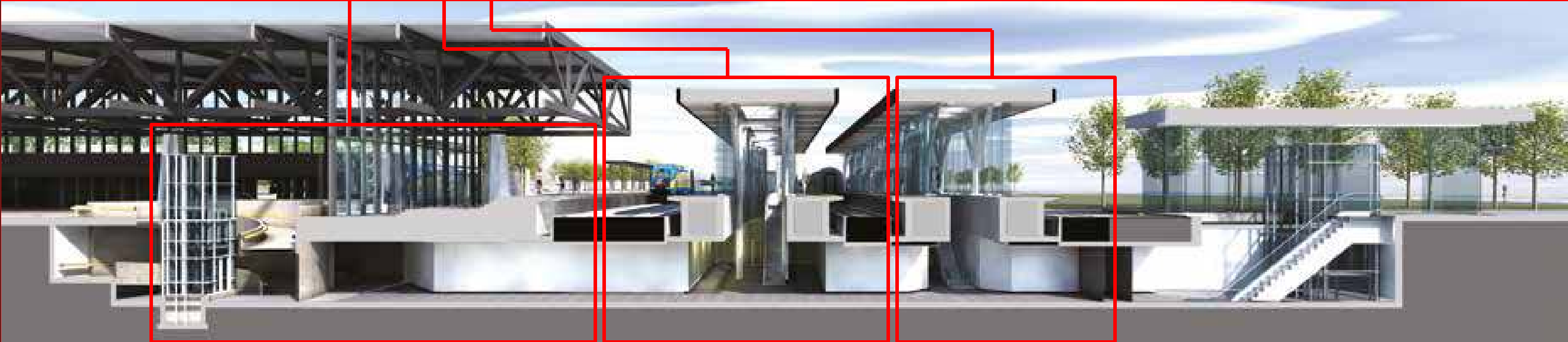
Lateral platform 445' x variable width, will service trains of 4 to 6 rail cars

Phase 1B (awaiting financing)






Central island platform 445' X 36' will service trains of 4 to 6 rail cars

Phase 2 (construction post 2035)

South island platform



# Concept Design Geometry and Components

	GEOMETRY	COMPONENTS	Design compatibility with the station's rigorous and minimalist architectural language, embodied in simple geometry and building components and strict colouristic expression, unfolds through a series of forms closely related to the station's concourse space frame structure.
DOUBLE POSTS CRUCIFORM SECTION		+	
OPENED 3D V' SQUARE SECTION	∨	◇	
CLOSED 3D V' SQUARE SECTION	∇	◇	
TRIPOD SQUARE SECTION	∧	◇	
COMBINED POST AND V' SQUARE SECTION	∨	◇	



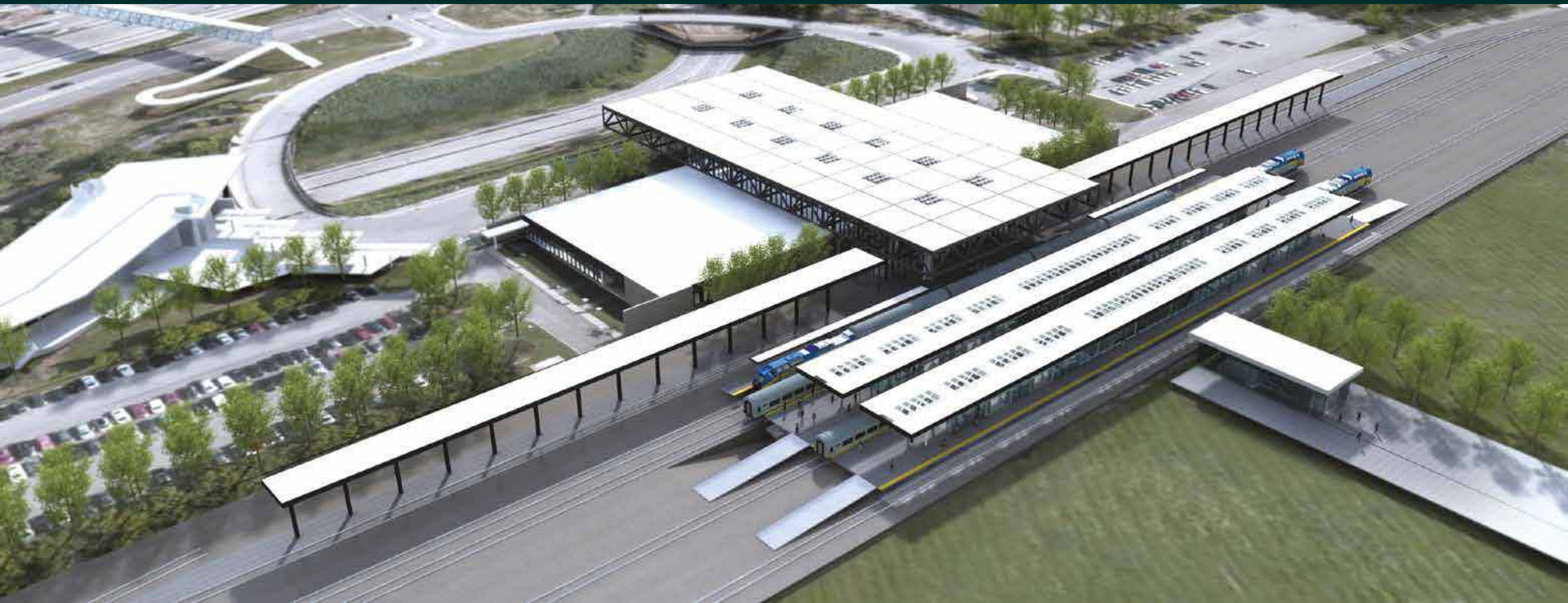


# Concept Design Materiality





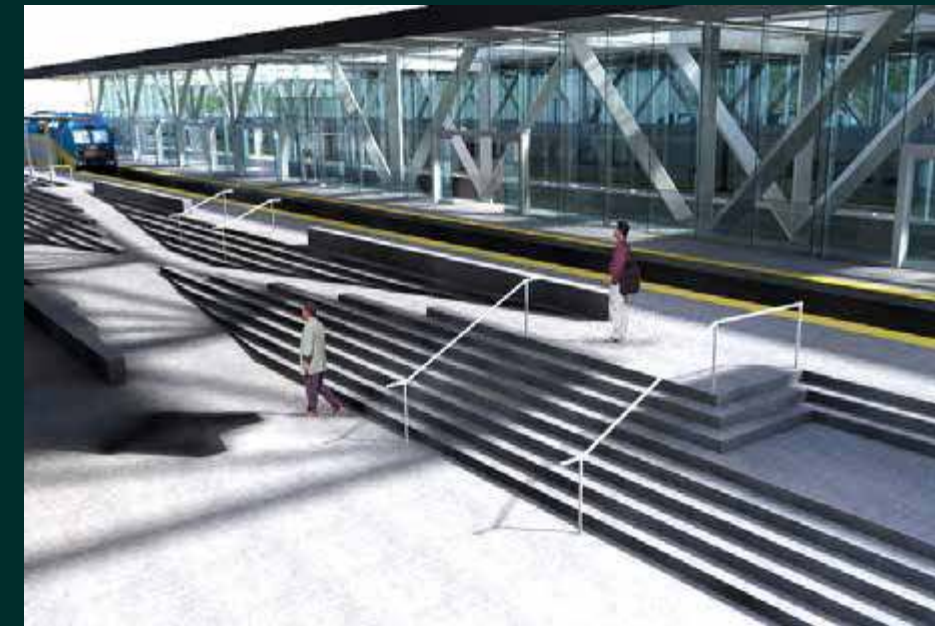
# Concept Design Overall Implementation





# Concept Design

## Phase IA – Lateral Platform and Ramps





# Concept Design Phase IA – New Elevator





# Concept Design

## Phase IB – North Island Platform





# Concept Design Phase IB and II – New Interiors





# Recommendation

That the Proposed Elevated Passenger Platforms for Ottawa Train Station receive Concept Design Approval subject to further detailed design development to address ACPDR comments related to heritage management, connectivity with the OLRT project, environmental sustainability, lighting and colour schemes.

Once these outstanding issues are resolved, that the final design be presented to ACPDR in March 2016 for comments and to the Board of Directors in April 2016 for final approval.

Thank you